

Agilent 6100 Series Quadrupole LC/MS Systems

Quick Start Guide

Where to find more information	1
Configuration Diagrams	3
ChemStation Views	5
Basic Operation	18
Deconvolution	23
Operating Tips	25
Troubleshooting Tips	27

This manual applies to OpenLAB CDS ChemStation Edition Software (version C.01.03 and later until superseded) and Agilent 6100 Series LC/MS instruments.

Where to find more information

Online Help Use online Help for in-depth information beyond what is shown in this *Quick Start Guide*. Display online Help in any of the following ways:

- Click the **Help** button in the toolbar.
- Select **Help Topics** from the **Help** menu.
- Click the **Help** button on most dialog boxes to show task-specific help.



Agilent Technologies

What's New in C.01.06?

User Guides Besides this Quick Start Guide, the following guides are shipped with your system and are also available in PDF format on the installation disk.

- *Agilent 6100 Series Quadrupole LC/MS Systems Familiarization Guide*
- *Agilent 6100 Series Quadrupole LC/MS Systems Concepts Guide*
- *Agilent 6100 Series Quadrupole LC/MS Systems Installation Guide*
- *Agilent 6000 Series LC/MS Maintenance Guide*

What's New in C.01.06?

- 5 kDa/sec and 10 kDa/sec Fast Scan speeds on G6120B and G6130B with step size of 0.2 Da. Multiple Fast Scan speeds, such as 5k Da/sec and 10k Da/sec., are now supported for Data Acquisition.
- 5 kDa/sec, 8 kDa/sec, and 16 kDa/sec Ultrafast Scan speeds on G6150B with step size of 0.2 Da. Multiple Ultrafast Scan speeds, such as 5 kDa/sec and 8 kDa/sec or 8 kDa/sec, and 16 kDa/sec are now supported for Data Acquisition.

What's New in C.01.03?

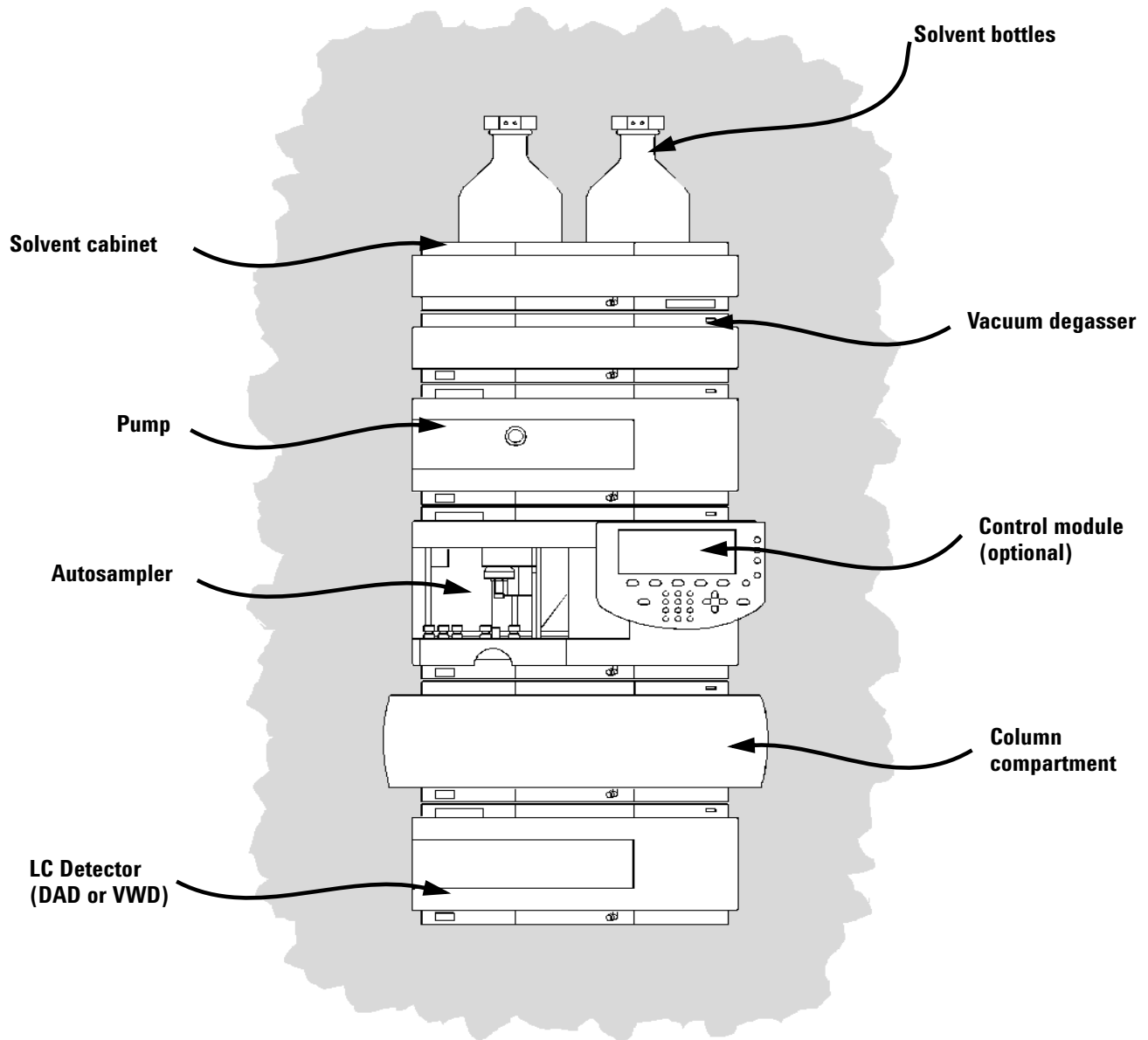
- Support for Windows 7 32-Bit and 64-Bit with Service Pack 1.
- Support for Fast Scan on G6120B.
- Support for Fast Polarity Switching on G6120B (hardware upgrade required).
- Support for ESI with Agilent Jet Stream Technology on G6130B (hardware upgrade required).

What's New in C.01.02?

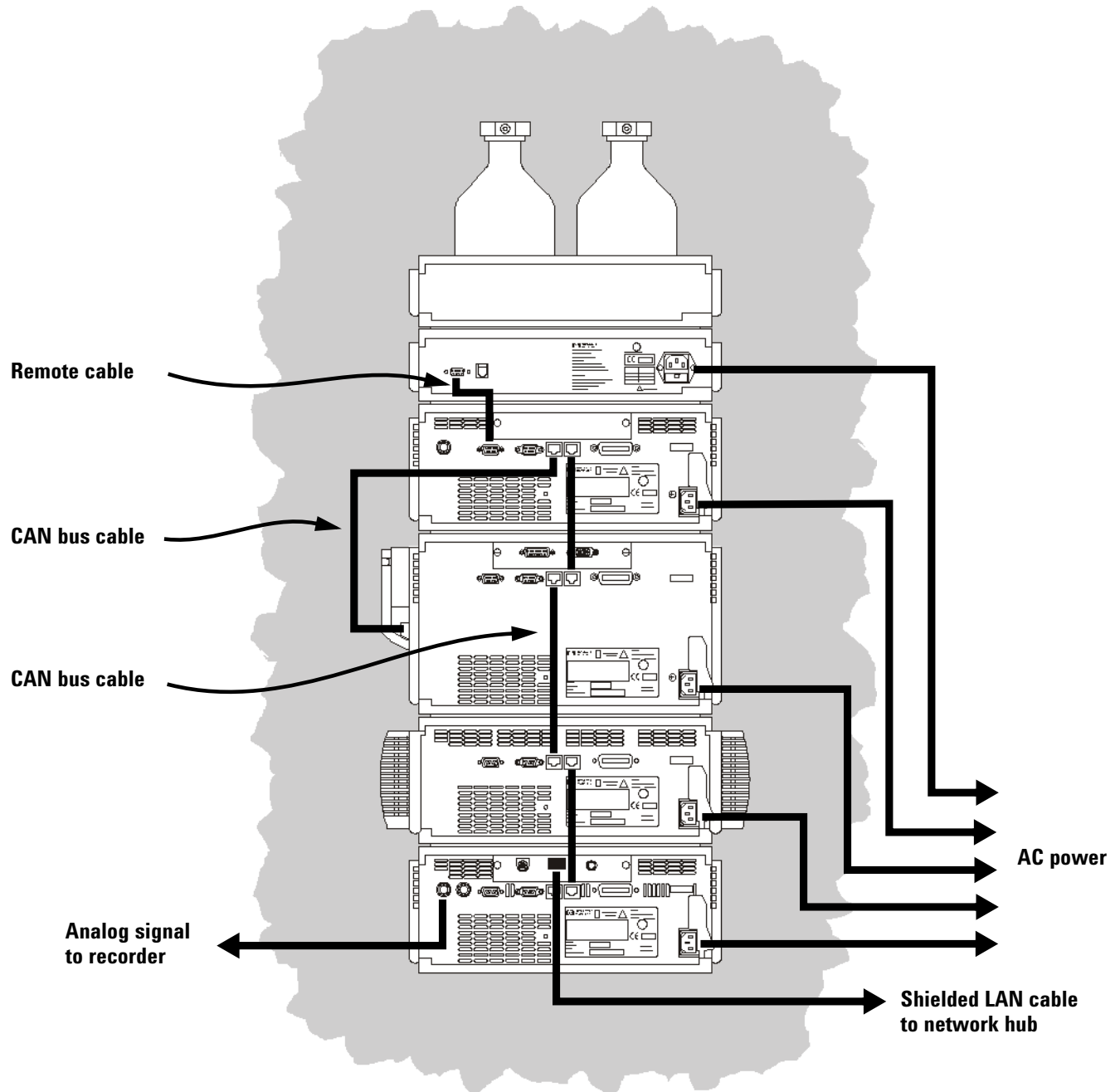
- Support for Windows 7 32-Bit and 64-Bit.
- Support for 6100 Series LC/MS on OpenLAB CDS ChemStation Edition.

Configuration Diagrams

1100/1200/1260/1290 Series LC

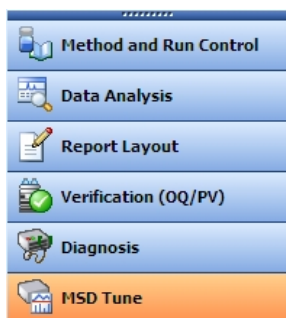


LC Cabling



ChemStation Views

The LC/MS ChemStation software consists of several views. Click one of the view buttons in the lower left corner of the screen, or from the **View** menu, to change to a different view.



Method and Run Control View Allows you to set up methods and adjust instrument parameters to inject samples and acquire data one sample at a time or in automated sequences. See the next page for more information.

Data Analysis View Allows you to perform various data evaluation tasks on chromatograms and spectra, such as integration, quantitation, checking peak purity, deconvolution, and report generation. See [page 9](#) for more information.

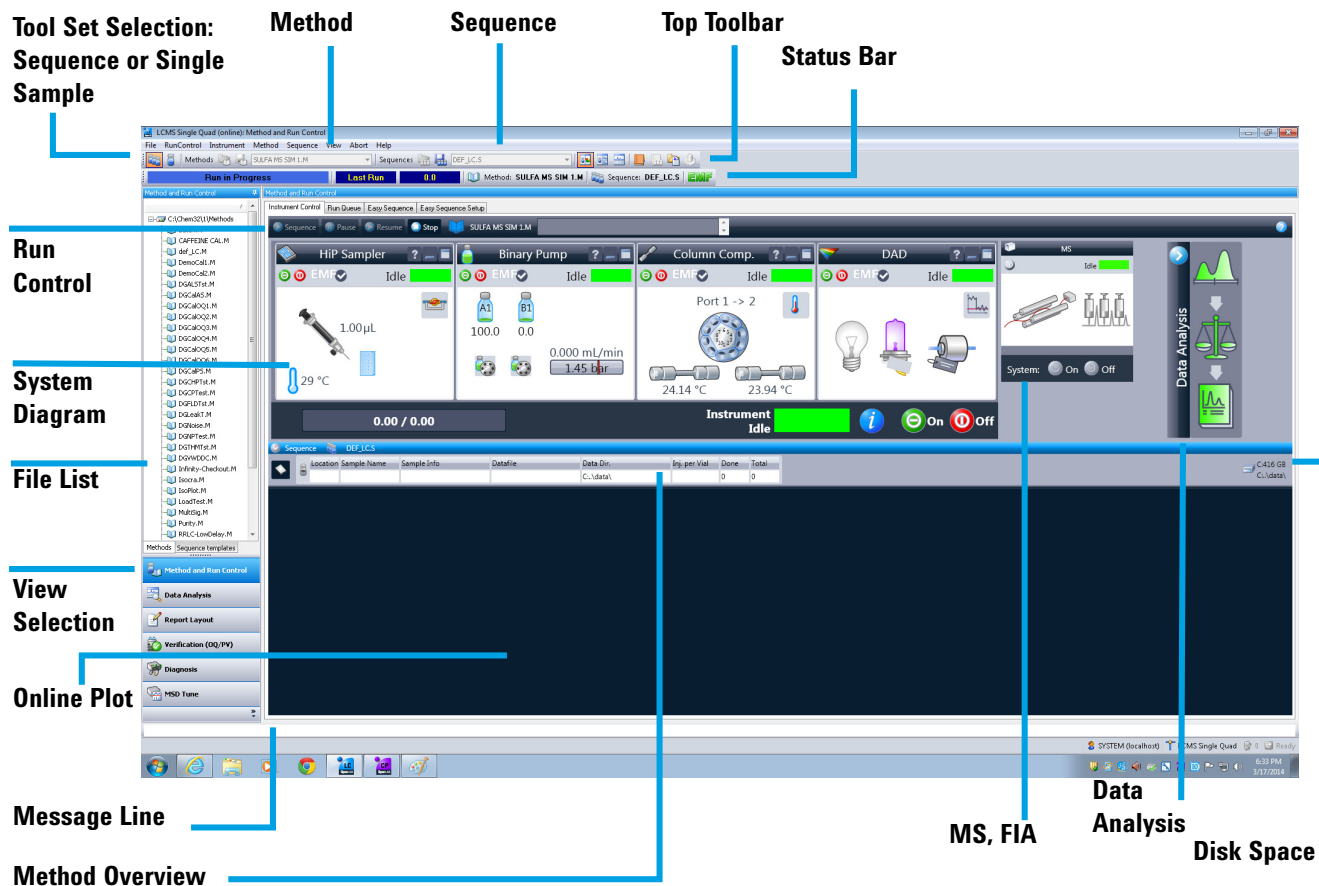
Report Layout View Allows you to design custom report templates to use with the data generated by your ChemStation. See [page 12](#) for more information.

Verification (OQ/PV) View For use by Agilent service engineers to determine if your system is operating in a predictable manner. This view is useful to show Good Laboratory Practice (GLP) compliance, which some government agencies can require. See [page 14](#) for more information.

Diagnosis View Allows you to run tests to diagnose instrument problems and access information on how to resolve these problems. The early maintenance feedback (EMF) feature can notify you when it is time to perform system maintenance before a problem occurs. See [page 16](#) for more information.

MSD Tune View In this view, you can calibrate your LC/MS automatically. You can also set MS parameters manually for specific types of molecules. See [page 17](#) for more information.

Method and Run Control View



NOTE

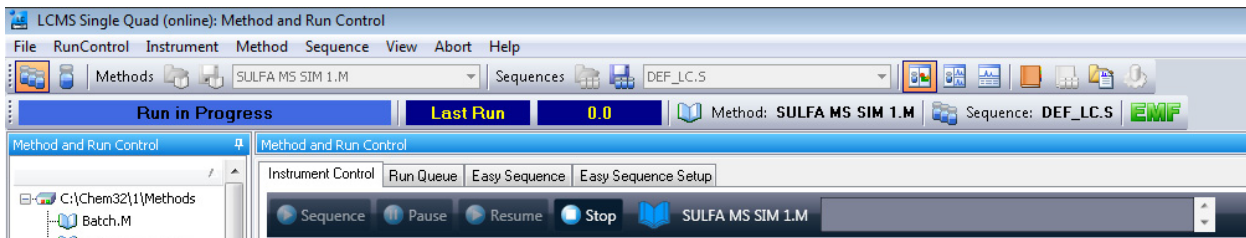
The user interface for Method and Run Control can be configured in two ways during installation. See *Agilent 6100 Series Single Quad LC/MS System Installation Guide* for information on installation and configuration.

If your instrument is configured with the Classic user interface, then see ChemStation online Help and these manuals on the ChemStation disk:

- *Agilent 6100 Series Single Quad LC/MS Systems Quick Start Guide*
- *Agilent 6100 Series Quadrupole LC/MS Systems Familiarization Guide*
- *Agilent 6100 Series Quadrupole LC/MS Systems Concepts Guide*

Status and Run Bars: Instrument Control Tab

Right-click the Method icon to see the following commands: Run Time Checklist, Method Information, Edit Entire Method, Method Audit Trail, Print Method, and Help.



Start Sequence

Stop Sequence

Method

System Diagram

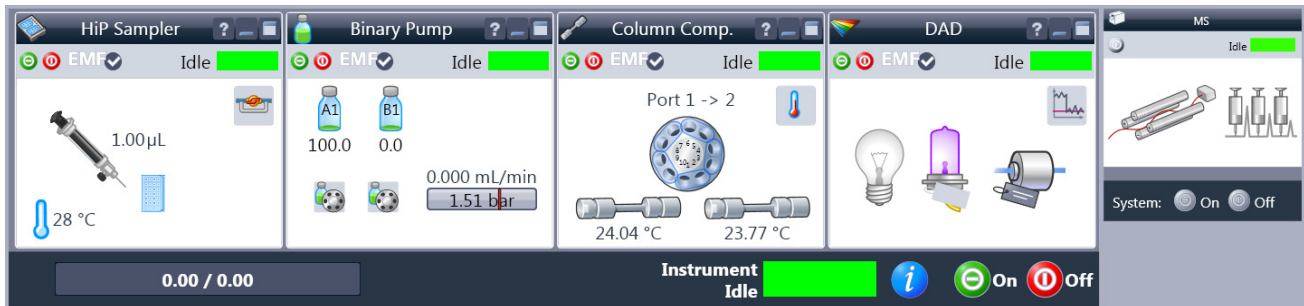
Each icon of the system diagram represents one component or module of your system. Click on an icon if you want to edit the method parameters or go to the online Help for that particular component.

Injector

Pump & Solvents

Column

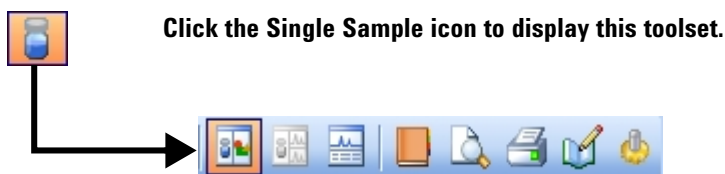
Detectors



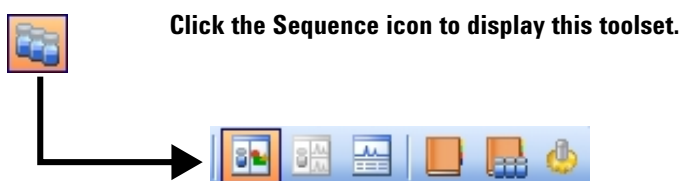
ChemStation Views

Method and Run Control View

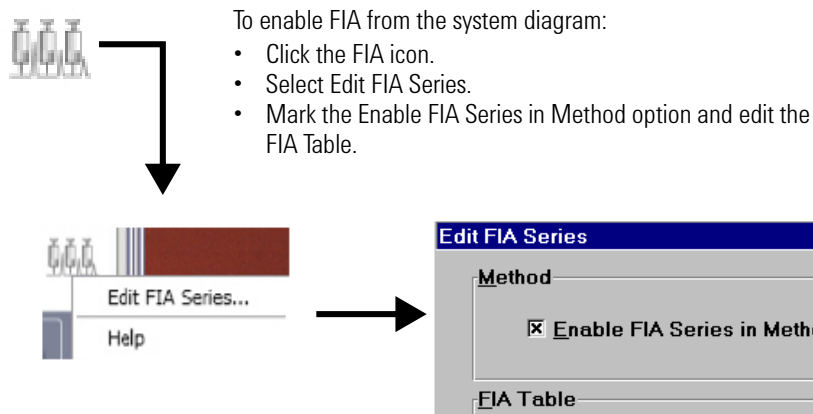
Single Sample Tool Set This toolset allows you to work on methods and run an analysis for a single sample. Move the cursor over a button to view a description of it.



Sequence Tool Set This toolset allows you to work on sequences and run automated analyses of multiple samples. Move the cursor over a button to view a description of it.



Flow Injection Analysis (FIA) This toolset allows you to inject multiple samples directly into the detector, which lets you bypass the chromatographic column. The results are sent to a single data file. FIA can be used for method development or for applications that do not require chromatography.



Data Analysis View

The screenshot shows the ChemStation Data Analysis View interface. On the left side, there is a File List showing a directory structure with folders like 'Single Runs', 'ANALYST', 'DEMO', and 'MSDEMO'. Below the File List is the Tool Set Selection area, which includes buttons for 'Integration', 'Calibration', 'Signal', and 'Purify'. The Signal View Selection area shows 'All Loaded Signals' with a dropdown menu. The Display Graphics Tools area includes buttons for 'DAD, Automatic Reference' and 'MSD, No Reference'. The DAD Signal area shows a chromatogram plot with peaks labeled with retention times. The LC/MS Signal area shows a mass spectrum plot with peaks labeled with m/z values. The Message Line is located at the bottom of the interface. At the top of the interface, there are Navigation Tools and Cursor Tools.

The various tool sets available in Data Analysis View are shown on the following pages. You can view a description of a button by moving the cursor over it.

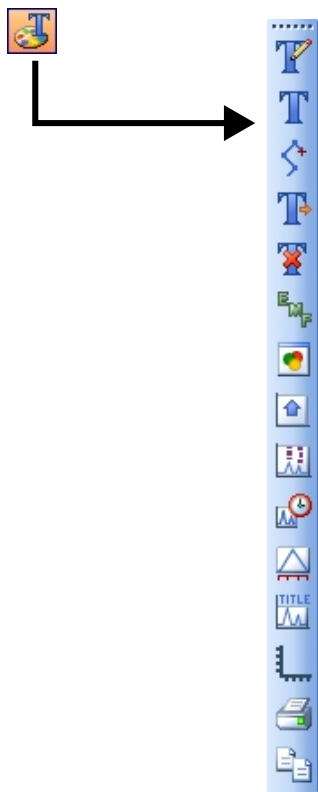
ChemStation Views

Data Analysis View

Common Tool Set This toolset is always present in Data Analysis view.



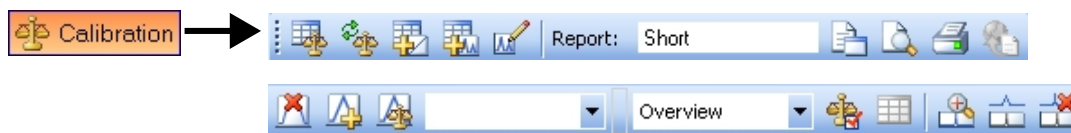
Graphics Tool Set Allows you to manipulate the graphic display.



Integration Tool Set Allows you to perform integration and reporting tasks on a chromatogram.



Calibration Tool Set Allows you to perform calibration tasks for quantitation.



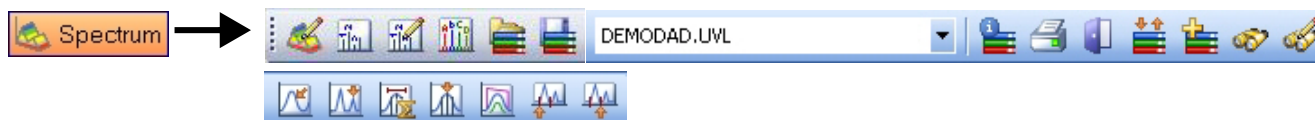
Signal Tool Set Allows you to work graphically with the UV or MS signal.



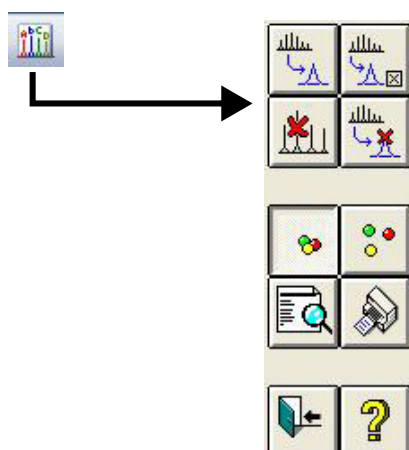
Purify Tool Set Allows you to work graphically with your purification data.



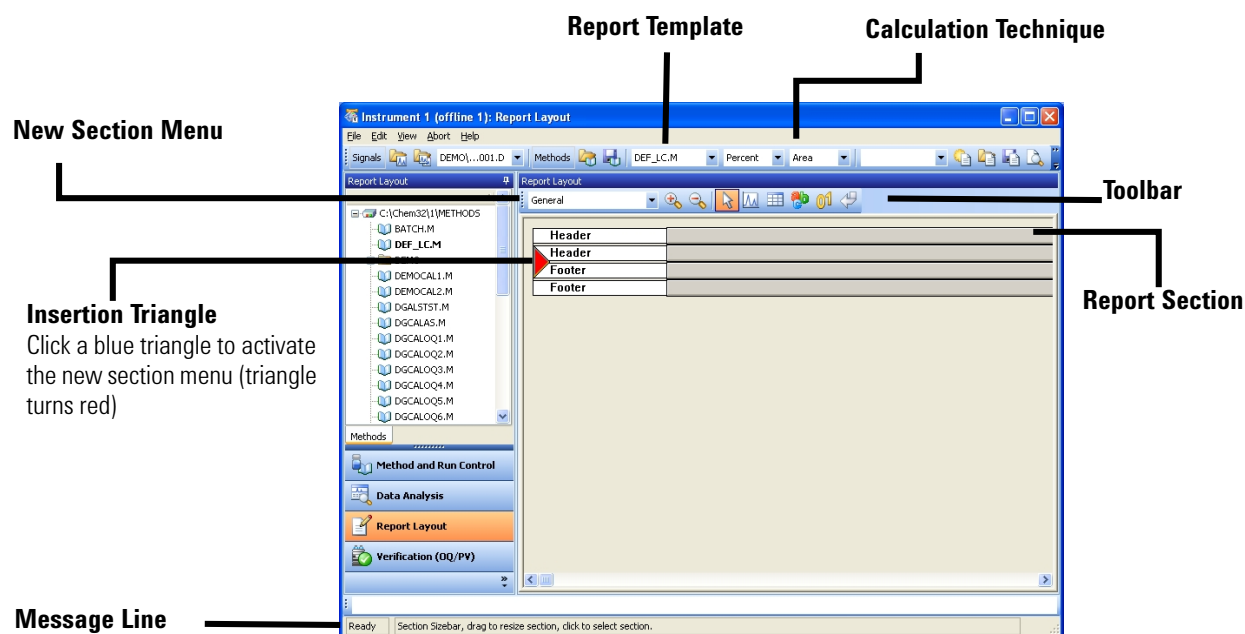
Spectral Tool Set Allows you to perform spectral evaluation tasks.



Deconvolution Tool Set Allows you to transform mass spectra from multiply-charged ions into a calculated molecular weight.



Report Layout View



Report Layout

Tool Set This toolset is present in the Report Layout view. Move the cursor over a button to view a description of it.



- Tips**
- Edit or create a report layout as described in the online Help.
 - To test your report layout, select a calculation technique from the drop-down list box to define how the results are calculated.
 - Load a data file. The results are loaded into the report template using the selected calculation.
 - Select **File / Add to Report Styles** to add your completed report template to the list of available report styles. Now you can use your customized report within a method.

Sample Report Layouts (in \CHEM32\REPSTYLE)

Template	Description
SIMPLE.FRP	Includes a chromatogram and calibration curves per calibrated compounds.
NESTED.FRP	Shows how to nest subsections.
SPECTRA.FRP	Shows how to include spectra.
PURITY.FRP	Shows how to include peak purity data.
ESTD.FRP	Uses the same elements as the standard ESTD reports so you can customize your external standard reports.
AREAPCT.FRP	Uses the same elements as the standard area percent report so you can customize your area percent reports.


Print Preview button



Report
Example of a simple Report Layout

Data File name: C:\HPCHEM\1\DATA\MSDEMO\CAFCAL02.D
Method name: C:\HPCHEM\1\METHODS\CAFCALIB.M

To test this template load a calibrated method

 **Agilent Technologies** Replace the logo by inserting your company logo as WMF graphic and insert your company name as a "constant text" here.

The general section comprises elements that are valid for the complete data file. The elements below were inserted using the text and number tools.

data acquired by: mcintyre
on: 1/6/97
vial # 2.000

DAD1 A, Sig=272,4 Ref=460,80 (MSDEMO\CAFCAL02.D)

mAU
10000
7500
5000
2500
0

0 0.5 1 1.5 2 2.5 3 min

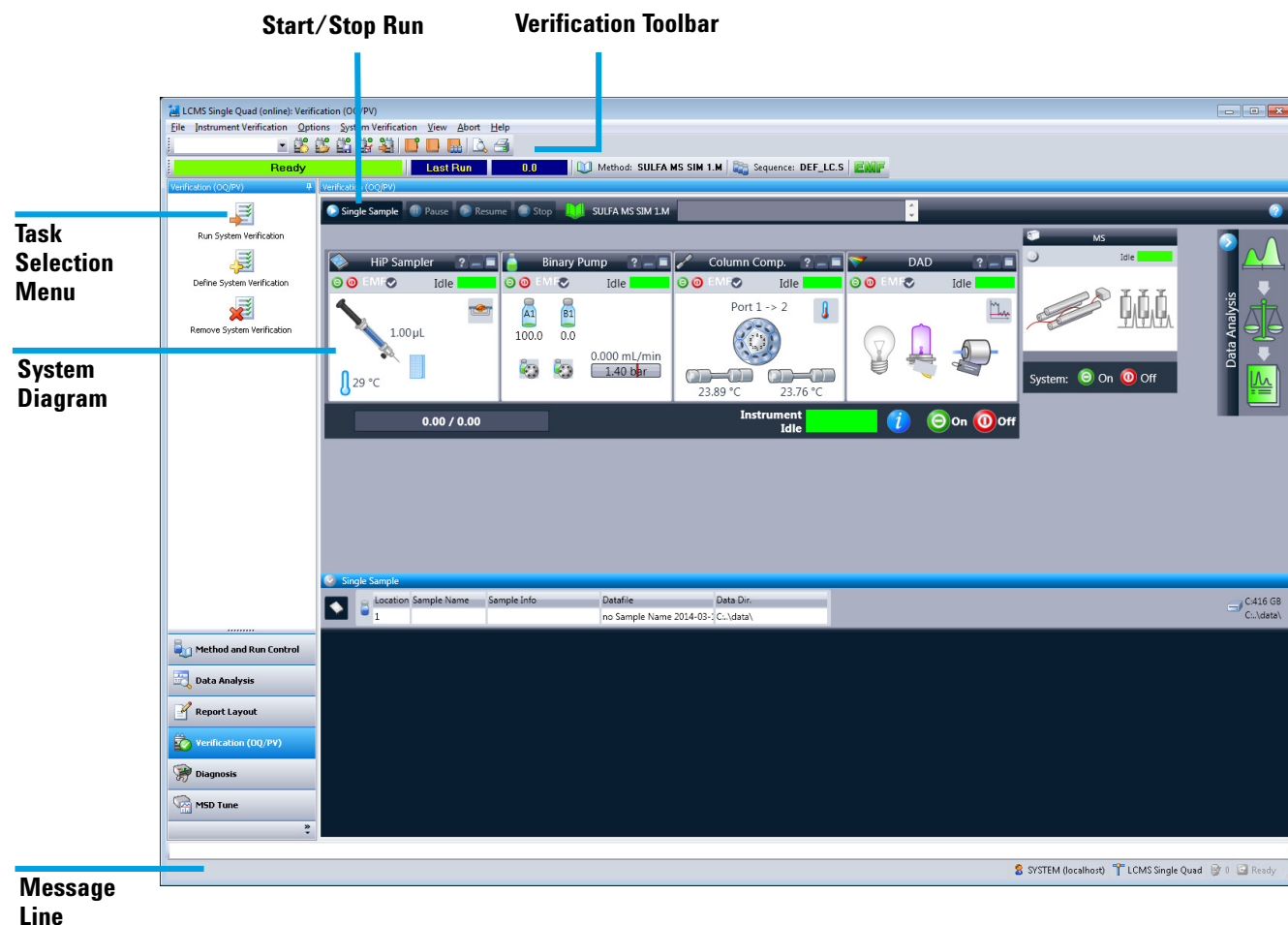
MSD1 TIC, MS File (MSDEMO\CAFCAL02.D)

10000
7500
5000
2500
0

HP LaserJet 4Si MX on LPT1:
Letter 8 1/2 x 11 in/Portrait

Close normal Page 1 of 2 Prev Next Print Help

Verification (OQ/PV) View



The Verification (OQ/PV) view lets Agilent service engineers test whether your analytical instruments and the ChemStation software are operating correctly according to predefined performance criteria.

Operation Qualification (OQ) Operation Qualification is the documented verification that the equipment-related system or subsystem performs as intended throughout representative or anticipated operating ranges.

Performance Verification (PV) Performance Verification is the documented verification that the process and or the total process-related system performs as intended throughout all anticipated operating ranges.

System Diagram Each icon of the system diagram represents one component or module of your system.

Verification Toolbar The Verification toolbar is displayed when you select **Show Top Toolbar** from the **View** menu. Move the cursor over a button to view a description of it.



Available Tests The following verification tests are supplied with your ChemStation software for use by an Agilent service engineer. Refer to the online Help for more information on these tests.

- VWD Wavelength Accuracy
- Intensity
- Holmium
- Temperature Accuracy
- Noise, Flow, Temperature
- DAD Wavelength Accuracy
- Injector Precision
- Detector Linearity/Carry-over
- Injector Linearity
- Gradient Composition

Diagnosis View

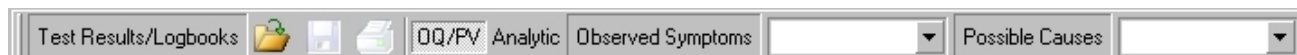
The screenshot shows the ChemStation Diagnosis View interface. The window title is "LCMS Single Quad (online): Diagnosis SULFA MS SIM 1.M, no Sample Name 2014-03-18 12:58:44.D, ATUNES.TUN". The menu bar includes File, Diagnosis, Maintenance, View, Abort, and Help. The toolbar contains icons for Test Results/Logbooks, OQ/PV, Analytic, Observed Symptoms, and Possible Causes. The main area is divided into several sections:

- Symptoms:** A central diagram of the instrument with a "Low signal" symptom highlighted.
- Possible Causes:** A list of causes, with "Capillary needs maintenance" selected.
- Cause Information Pad:** A memo pad showing details for "Capillary needs maintenance", including "Capillary Current Plot" and "Fragmentor" with "Show" buttons.
- MSD Generic Information:** A table displaying system details:

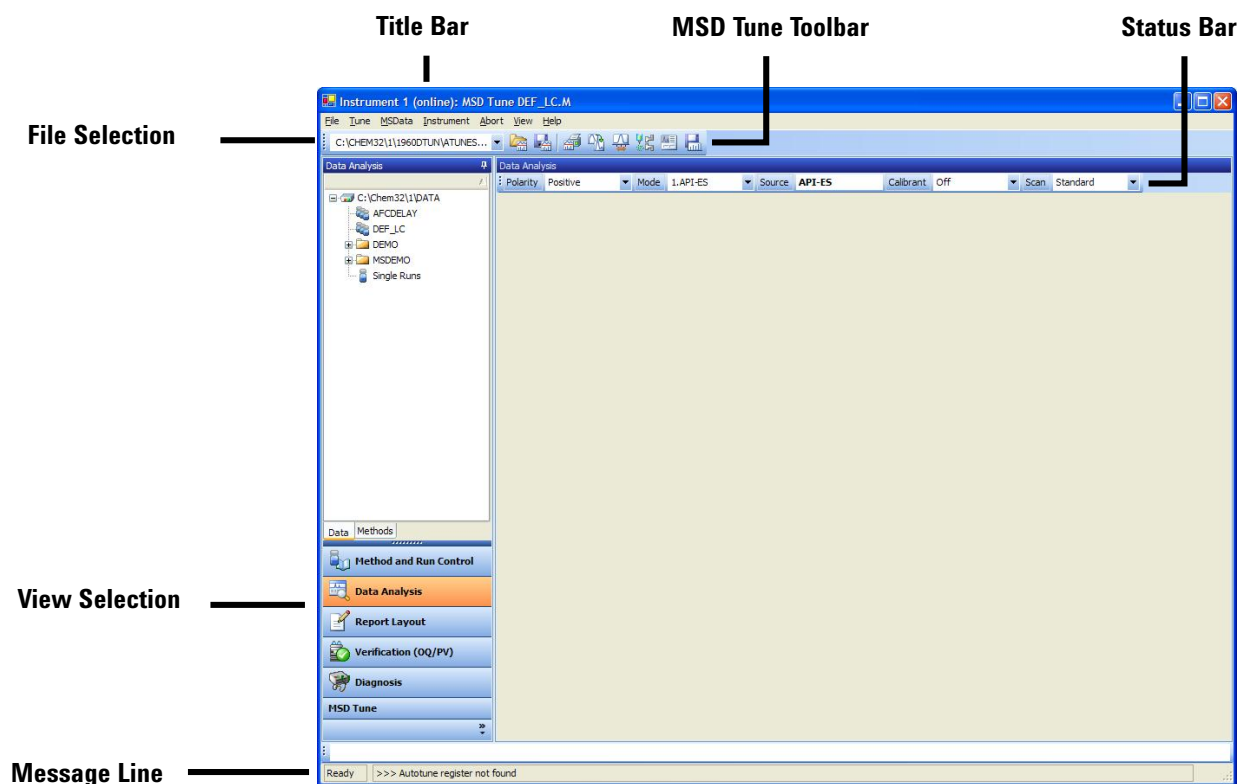
Product No.	G6130A	Serial No.	US920650497
FW Rev. SmartCard	3.02.48	MSD On Time	0.59 h
Manufacturing Date	03/10/2005	Instrument iButton	Show
LAN Address	192.168.254.12	Source iButton	Show
- Task Selection Menu:** A vertical list of icons for Tests..., System On, and System Off.
- Instrument Panel:** A vertical list of buttons for Method and Run Control, Data Analysis, Report Layout, Verification (OQ/PV), Diagnosis, and MSD Tune.
- Message Line:** A status bar at the bottom showing "SYSTEM (localhost) LCMS Single Quad 0 Ready".

This view allows you to carry out diagnostic and maintenance activities on your system.

Diagnosis Toolbar The Diagnosis toolbar is displayed when you select **Show Top Toolbar** from the **View** menu. Move the cursor over button to view a description of it.











MSD Tune View



MSD Tune Toolset

This toolset is present in MSD Tune view.



	Load an LC/MS tune file.		Calibrate the mass axis.
	Save the current tune file.		Change spray chamber parameters.
	Generate a profile and scan report.		Edit LC/MS parameters for manual tuning.
	Autotune the LC/MS and print a tune report.		Acquire multiple scans and send results to data file.

Basic Operation

Start up and shut down the system

Basic Operation

Start up and shut down the system

Task	Instruction	Comment
To start up the system	<ol style="list-style-type: none">1 From the Method and Run Control view, click the  button on the system status bar. When you move mouse over the button, if system is currently idle, it turns green.2 Set up the LC conditions (pump, column heater, and detector).3 Set up the LC/MS spray chamber conditions as described in the MSD Spray Chamber dialog box topic in the online Help. <p>Allow 15 minutes for the system to warm up.</p>	<p>This procedure assumes that the system is under vacuum and the LC and LC/MS are properly connected. It also assumes that the liquid flow path is properly set up.</p>
To put the system in Standby Mode	<ol style="list-style-type: none">1 Flush the system with pure mobile phase to ensure that the flow path is clear of buffers. This prevents the nebulizer from plugging. A plugged nebulizer can cause a high back pressure, which can damage the LC flow cell. It is good practice to flush the flow path (including the column) for 5 to 10 minutes with a mobile phase without buffers such as 50:50 water/acetonitrile.2 Click the  button on the system status bar. All modules are set to standby mode (indicated by the gray color in the system diagram).	<p>Put the system in standby mode overnight or whenever you are not analyzing samples for an extended time. The standby state for the LC/MS leaves the nebulizer and drying gas on at low flow.</p> <p>Standby for the LC/MS is:</p> <ul style="list-style-type: none">• 20 psi for the nebulizer,• 3 L/min for drying gas,• 300 °C for drying gas temperature,• 325 °C for the APCI vaporizer, if present• the MS stream selection valve is set LC to Waste. <p>For Agilent Jet Stream source:</p> <ul style="list-style-type: none">• Sheath temp 100°C• Sheath gas flow 2.2 L/minute

Tune the LC/MS

When the LC/MS is used as a detector for the LC, a mass spectrum is associated with each data point in the LC chromatogram. To obtain high quality, accurate mass spectra, optimize the LC/MS to:

- Maximize sensitivity
- Maintain acceptable resolution
- Ensure accurate mass assignment

Tuning is the process of adjusting LC/MS parameters to achieve these goals. After the LC/MS parameters have been optimized, they must be saved in a tune file (.tun). This tune file is then specified in the method that is used to acquire data for your samples.

Frequent tuning, whether automated or manual, is not required. Once tuned, the LC/MS is stable. Tuning is needed no more often than monthly, weekly at most.

Wait 4 hours after pumpdown before tuning or operating your LC/MS. The analyzer takes about 11 hours to reach thermal equilibrium. Tune files that are created or data that is acquired before the LC/MS is at thermal equilibrium can have incorrect mass assignments and other inaccuracies.

Task	Instructions	Comments
To use Autotune	<ol style="list-style-type: none"> 1 From the MSD Tune view, select Autotune from the Tune menu or click the Autotune toolbar button. 2 Review the tune report that is printed automatically when tuning is completed. 	Use autotune for automated adjustment of the LC/MS performance.

Basic Operation

Tune the LC/MS

Task	Instructions	Comments
To use Check Tune	<ol style="list-style-type: none">1 Select Check Tune from the Tune menu.2 Review the Check Tune report. Adjustments are suggested for values that are outside of acceptable ranges.	Use Check Tune to determine quickly whether the LC/MS is correctly tuned. It performs a single profile scan of the tune masses and compares the peak widths and mass axes with target values.
To use Manual Tune	<ol style="list-style-type: none">1 Select Manual Tune from the Tune menu.2 Set the desired mass resolution (adjusting width gain and width offset).3 Calibrate the mass axis (adjusting mass gain and mass offset).4 Optimize the ion transmission through the source ion optics (fragmentor, skimmer(s), lens 1, lens 2, and octopole peak).5 Adjust the signal strength (setting iris and adjusting the multiplier gain). <p>Fragmentor and gain are method parameters. The fragmentor affects ion transmission and fragmentation. For more information, see the online Help.</p>	Use Manual Tune when you want to: <ul style="list-style-type: none">• Achieve maximum sensitivity by sacrificing some resolution• Tune specifically for the very low end (<150 amu) of the mass range• Tune with a compound other than the standard calibrants

Acquire LC/MS Data

Modes of Acquisition

There are three modes of acquiring data:






- Running a method for a single sample
- Running a sequence for multiple samples
- Running an FIA series

Note the following about acquiring data:

- All three acquisition modes require an appropriate method.
- Samples can be injected either manually or with an ALS.
- Always start a run from the software.
- An FIA method cannot be used in a sequence but multiple FIA methods can be run sequentially.

To edit a method and start a run




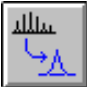
Once you know the acquisition mode that you want to use, you must set up an appropriate method. Methods are set up in the Method and Run Control view.

Instructions	Comments
1 Activate the single sample toolset by clicking the  button on the toolbar.	
2 Load a method by selecting Method / Load Method or by clicking the  button on the toolbar and selecting a method from the list.	
3 Click the  button to begin editing the method. You can also begin by selecting Edit Entire Method from the Method menu or by right-clicking the  icon on the Run Control Bar.	
4 Select the method sections you want to edit (select all sections to become familiar with the method parameters that are available) and click OK.	A series of dialog boxes is displayed, which allows you to set up your method and instrument parameters.
5 Add any method comments you want to appear on your reports.	Click the Help button on any of the method dialog boxes for descriptive information on the items available in each.
6 Set up the instrument parameters, such as pump, injector, DAD or VWD, column thermostat, MS signals, and MS spray chamber.	
7 Set up the Data Analysis parameters, such as signal details, integration events, report parameters, instrument curves, calibration curves, calibration table, and ion parameters.	
8 Complete the Run Time Checklist.	
9 Save the method using a different name. Select Method / Save Method As or click the  button on the toolbar.	Once you are familiar with the options that are available, use the system diagram menus for quick access to particular method parameters.
10 When you are ready to begin a run, click the Start button.	

Deconvolution


Deconvolution is an optional process (additional license required) that transforms mass spectra from multiply-charged ions into a calculated molecular weight.

To deconvolute a mass spectrum

Instructions	Comments
1 In the Data Analysis view, load an electrospray MS data file. The TIC is displayed.	
2 Generate the MS spectrum that you want to deconvolute. (Select the Spectral task tool set and use the spectrum selection tools to pick the spectrum of interest).	These operations are performed on data acquired in full scan mode.
3 Click the Enter Deconvolution Tool button to set up the deconvolution display area.	
4 When the spectrum is displayed, click the Label Ions button to locate masses to be used in deconvolution.	
5 Examine the ions that were found. Very noisy data or data with unresolved regions often need special settings to find ions.	You can use the Ion Label Options button to optimize the set of ions found.
6 Click the Edit Deconvolution Parameters button to change any of the parameters.	
7 Click the Run Deconvolution button to begin the deconvolution process.	
	Once the deconvolution is done, the components are displayed in the upper right window. The charge states are displayed in the lower right window.

Deconvolution

Deconvolution Report

Instructions	Comments
8 Select specific components from the Component list to look at individual components or groups of components.	Optionally, click the Preview Deconvolution Report button or click the Print Report button.
9 Optionally, select components from the Component List box and then click the Delete Components button. 10 Repeat the process.	 This action removes the peaks for the selected components from the original spectrum. You can then continue with step 4 (previous), using this new spectrum.

Deconvolution Report

The Deconvolution report contains summary information about each component selected, along with detailed information on how each peak in a component contributes to the molecular weight of the component. In the first part of the report, the components are ranked by percent relative abundance, which is useful for estimating the percent of impurities.

The actual molecular weight can differ from the computed molecular weight even if the data fit a Gaussian curve perfectly, due to other errors such as errors in mass axis assignment or unresolved chemical impurities.

The Deconvolution software is optional and is part of the OpenLAB CDS ChemStation C.01.xx or M8363AA (ChemStation C.0x) Bioanalysis Software package.

Operating Tips

- Back up your data and methods **regularly** to avoid loss of data in case the files are accidentally overwritten, deleted, or if a hardware problem develops with your disk drive.
- Put the system in standby mode overnight or whenever you are analyzing samples for an extended time.
- Verify that the tune file you are using is appropriate for your samples.
- Save Tune reports in an MS Logbook for future reference.
- Regular system maintenance can reduce problems. Keep a maintenance record.
- Use the Maintenance Logbook and EMF features in Diagnosis view to help you track when maintenance is needed and to keep an online maintenance record.
- Flush the sample path and clean the spray chamber, capillary tip, and spray shield daily or at the end of each shift. Check the foreline pump fluid level every week.
- The spray chamber vent hose must be connected to a lab vent that is used **only** for the source. The vent hose must be separate from the vent hose for the foreline pump. Otherwise, waste products can migrate into the spray chamber vent producing chemical noise.
- Samples must be filtered. If no chromatography is used, they must be salt and detergent-free.
- If a UV detector is available, use it in series with the LC/MS. Try to minimize chromatographic peak broadening by using low dispersion tubing.
- To avoid chromatographic band broadening, be sure that all tubing connections are free of dead volume. Use zero dead-volume (ZDV) fittings when possible.
- Use the following table as a guide to using SIM, condensed scan, and full scan acquisition modes.

Task	Mode
Acquire electrospray data for samples containing large, multiply-charged analytes.	Full Scan
Analyze a mixture with unknown components (small molecules).	Scan

Operating Tips

Task	Mode
Analyze a mixture with known components in unknown amounts (quantitate).	Scan or SIM
Identify the presence of a few known compounds at low levels within a mixture.	SIM
Use fast chromatography on 1.0-MHz LC/MS systems (G6120B, G6130B) without missing peaks.	Fast Scan
Use fast chromatography on 1.4-MHz LC/MS systems (G6150B) without missing peaks.	Ultra Fast Scan

Troubleshooting Tips

No peaks

- ✓ Verify that there is spray from the nebulizer.
- ✓ Verify that the capillary voltage is set correctly.
- ✓ In APCI mode, verify that the corona needle is installed.
In APCI mode, verify that the Corona Current setting is 2 μA or higher, and that the Corona Voltage is between 1500 and 5000 V.
- ✓ Verify that the MS system is tuned correctly.
- ✓ Verify that MS vacuum pressures are within normal ranges.
- ✓ Check the drying gas flow and temperature.
- ✓ Verify that the fragmentor is set correctly.
- ✓ Check if any error message indicates a problem with electronics.
- ✓ Verify that sufficient sample is present in vial.

Poor mass accuracy

- ✓ Recalibrate the mass axis.
- ✓ Verify that the ions used for tuning span the mass range of the sample ions and that they show strong, stable signals.

Low signal

- ✓ Check the solution chemistry. Verify that the solvent you are using is appropriate for your sample. Mixed samples can exhibit signal suppression of one or more components.
- ✓ Verify that the sample is fresh and has been stored correctly.
- ✓ Verify that the MS system is tuned correctly.
- ✓ Check the nebulizer condition.
- ✓ Clean the capillary entrance.
- ✓ Check the capillary for damage and contamination.

Troubleshooting Tips

- ✓ Verify that the spray chamber parameters are set correctly, such as drying gas heater and nebulizer pressure.

Unstable signal

- ✓ Verify that the drying gas flow and temperature are correct for the solvent flow you are using.
- ✓ Verify that the solvent is thoroughly degassed. Do **not** use ultrasonic degassing with protein samples.
- ✓ Verify that the LC backpressure is steady; steady backpressure indicates a steady solvent flow.

High spectral noise

- ✓ Use appropriate mass filter values.
- ✓ Check the spray shape. Nebulizer can be damaged or incorrectly set.
- ✓ Verify that drying gas flow and temperature are correct for the solvent flow you are using.
- ✓ Verify that the solvent is thoroughly degassed. Do **not** use ultrasonic degassing with protein samples.
- ✓ Verify that the LC backpressure is steady; steady backpressure indicates a steady solvent flow.
- ✓ If you are using water as part of the mobile phase, verify that it is deionized (>18MΩ).

Droplets, not spray, exiting the nebulizer

- ✓ Verify that the nebulizing gas pressure is set high enough for the LC flow being used.
- ✓ Check the position of the needle in the nebulizer.
- ✓ Stop the solvent flow and remove the nebulizer assembly. Use a magnifying glass to examine the end of the nebulizer for damage.

Troubleshooting Tips

No flow

- ✓ Verify that the LC pump is on and there is sufficient solvent in the correct bottle.
- ✓ Verify that the solvent supply lines are free of air bubbles. Purge the appropriate pump channels, if needed.
- ✓ Check for LC error messages.
- ✓ Check for blockages. Repair or replace any blocked components.
- ✓ Check for leaks.
- ✓ Verify that the MS stream selector valve is set to **LC to MSD**.

Undesired fragmentation

- ✓ Fragmentor is set too high.
- ✓ Ionization is causing fragmentation (APCI vs. Electrospray).
- ✓ APCI temperature is too high.

Safety Warnings

Intended Purpose

Use of the LC/MS in a manner not intended by the manufacturer is prohibited.

Safety Class

The LC/MS is a Safety Class 1 instrument. It has been designed and tested in accordance with IEC Publication 1010-1, Safety Requirements for Electrical Equipment for Measurement, Control, and Laboratory Use.

Stack Configuration

WARNING

Do not stack more than three LC modules of any kind on top of the LC/MS instrument. Stacking more than three LC modules is potentially unstable and dangerous.

Placing the LC modules on top of the LC/MS is also inconvenient. It puts the solvent bottles and some LC controls out of easy reach and requires the LC stack to be disassembled and removed for LC/MS maintenance.

WARNING

Use only Nitrogen as the drying and nebulizer gas. Air, oxygen, or other gases, when combined with solvents and high voltages in the spray chamber, can result in an explosion.

WARNING

Do not connect the LC/MS to a power source that is not equipped with a protective earth contact. You can create a shock hazard for the operator and can damage the instrument.

WARNING

Do not interrupt the protective conductor inside or outside the LC/MS or disconnect the protective earth terminal. You can create a shock hazard for the operator and can damage the instrument.

Safety Warnings

WARNING

Do not adjust, maintain, or repair the opened instrument while it is connected to a power source. Only trained persons who are aware of the hazards involved can perform these operations.

WARNING

Before you perform maintenance on the electronics vent and turn off the LC/MS and disconnect the power cord. The power switch on the front of the LC/MS does not completely cut power to the instrument.

www.agilent.com

In this book

This book contains:

- [Where to find more information](#)
- [What's New in C.01.06?](#)
- [Configuration Diagrams](#)
- [ChemStation Views](#)
- [Basic Operation](#)
- [Operating Tips](#)
- [Troubleshooting Tips](#)
- [Safety Warnings](#)

© Agilent Technologies, Inc. 2014

Printed in USA
Revision A, March 2014



G1960-90082



Agilent Technologies