



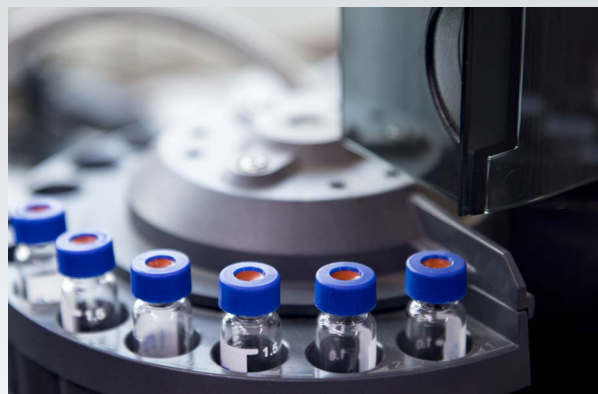
LABTEK™



Designed to meet the requirements of any of Sciex LCMS Models

- Provides 20 LPM of Curtain Gas (Nitrogen), 26 LPM of Source Gas (Zero Air) , and 25 LPM of Exhaust Gas (Dry Air)
- Designed for continuous use
- Dual-bed, PSA technology delivers up to 99.99% pure nitrogen (flow rate dependent)
- Exceptionally quiet
- Touchscreen control displays status and maintenance alerts
- Remote monitoring and management capabilities
- UL 508A ICP listed

N₂ Tri-Gas NITROGEN GENERATORS

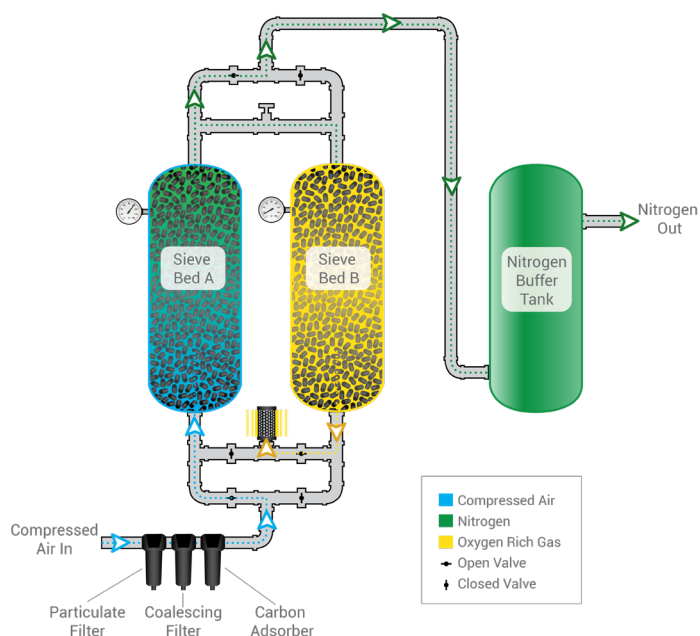


LABTEK's **N₂ Tri-Gas** is the only generator you'll need to provide gas requirements to the full suite of Sciex LCMS instruments. The N₂ Tri-Gas generates gas on-demand and meets the specific needs of your Sciex LCMS Model. Our units use state-of-the-art, dual-bed pressure swing adsorption (PSA) technology to produce high-purity, LCMS grade nitrogen without taking up valuable lab workspace. Additional filtration ensures that your generator and analytical equipment are free from contamination and particulates.



HOW OUR TECHNOLOGY WORKS

LABTEK nitrogen generation technology safely separates the readily available nitrogen from the air we breathe using Carbon Molecular Sieve (CMS). Molecules smaller than nitrogen are adsorbed into the CMS, allowing the larger nitrogen molecules to pass through into a storage tank for later process use. Our generators create quality nitrogen, ready for immediate use by any application.



- 1 Compressed air is filtered, removing oil, water, dirt and other impurities.
- 2 Sieve Bed A acts as a sponge, using carbon molecular sieve to adsorb oxygen.
- 3 Simultaneously, Sieve Bed B is in recovery. After a period of time, the process will switch.
- 4 Specified purity nitrogen is discharged into the nitrogen buffer tank, ensuring a steady downstream supply and uninterrupted N₂ usage.

SPECIFICATIONS

	N ₂ Tri-Gas
Curtain Gas (Nitrogen)	0-20 LPM
Source Gas (Zero Air)	0-26 LPM
Exhaust Gas (Dry Air)	0-25 LPM
N ₂ Outlet Pressure	0-116 PSIG
Nitrogen Purity	Up to 99.99% Pure N ₂
Particulates	< 0.01 um
Suspended Liquids	None
Electrical Required	230V/1Ph
Unit Dimensions	40" H x 23" W x 28" D
Maintenance	Annual (Filters)

A Safer, Smarter and Cost-Effective Solution

- No missed cylinder deliveries
- One-year warranty*
- Flexible service plans

Request a Quote Today

lab@southteksystems.com

(888) 526-6284

* Per South-Tek Systems terms and conditions.